

INTERCOM

Bismarck Public Schools weekly employee newsletter

August 26, 2010

A lesson from Michelangelo

This summer, I became acquainted with the great Michelangelo, Italian sculptor, painter, architect and poet. It all started in Barnes and Noble when I was perusing one of the tables with a variety of books. I just happened to pick up a book on the High Renaissance and began paging through the book, trying to gain a better understanding of the difference between Renaissance and High Renaissance.

As I paged through it I came across the Bust of Moses. I could not believe anyone could create such a beautiful sculpture. As I read on, I learned that the Bust of Moses is considered one of the greatest sculptures of all time. When Michelangelo was asked how he was able to sculpt such a wondrous piece of art, he replied, "It was quite easy! It was in the marble all the time. All I had to do was get it out."

Michelangelo's approach to sculpture was different than most sculptors. He labored to free the figure born in his mind from the confines of the marble rock. Many of his unfinished sculptures of slaves clearly show his ground breaking process of taking away, or carving and, in his own words, "liberating the figure imprisoned in the marble". The unfinished sculptures, according to the author of the book, are like seeing a three-dimensional drawing where all the mistakes are bare and exposed. Even in the statues incomplete state, the form emerges out of the marble in a manner that is both mysterious and powerful.

I did not purchase the book, but as I drove home I could not help but think of how teachers are very much like Michelangelo. Just as the Bust of Moses was in the marble, the interests, talents,

What an awesome responsibility we have as educators to sculpt and mold students as they mature and grow in their abilities...

personality, academic ability and hopes and dreams are in the children we as adults teach.

Students come to school in an incomplete state, and through education a student gradually emerges out of their makeup, often bare and exposed. What slowly emerges, and somewhat remains the same, is at times elusive and ambiguous to educators. What an awesome responsibility we have as educators to sculpt and mold students as they mature and grow in their abilities, brought out by dedicated and caring teachers. What a privilege to be entrusted with our community's children; we help prepare our future citizens.

As educators, we must have a passion for what we do and help liberate all children from what may prevent them from becoming all they are capable of becoming. There is ability and goodness in all our children. Like Michelangelo, all we have to do is get it out!

Have a rewarding school year!

*John M. Salwei
Superintendent*

Calendar Call

- Sept 1 Secondary Administrators 7:30 am, Hughes #3
Elementary Principals 9 am, Hughes #1
- Sept 6 Labor Day, no school
- Sept 12 Apple Dash, \$10/employee! 4 pm, Hughes Field
- Sept 13 School Board Meeting 5:15 pm, City/County Bldg.
- Sept 15 Secondary Administrators 7:30 am, Hughes #3
Team Leadership Mtg. 9 am, Hughes #1 & 2
TFFR retirement meeting 6:30-8 pm, Horizon

Kudos!

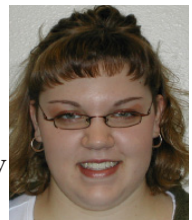
Michael Netzloff, a teacher of German at CHS and Horizon, was one of 20 Americans chosen for the Fulbright Teacher Spring Seminar in



Germany. They learned about the 3-tiered German Educational System in Baden-Wuerttemberg and each went to two schools in various parts of Germany to try to establish links with their own home schools. Netzloff visited schools in Penzberg, Bavaria, and Frankfurt, Hessen.

Congrats!

Jessica DeVaal was awarded the Secondary Rookie Business Teacher of the Year Award at the annual Mountain-Plains Business Education Association Conference this summer. She is a business teacher at CHS.



Credit Courses

√ **Pearson Successnet** - 8/26 or 8/30

√ **Moodle for Administrators** - 8/31

√ (By invitation only) **BIM Elementary Technology Content Specific Training in Reading/Math**: choose only 1 date - 8/31 or 9/1

√ **Proctoring MAP and/or MAP Primary Assessments** - 9/1 or 9/13

√ **Staff Tracker Lane Change and Account Management** - 9/2

√ **FASTT Math Training (gr. 4 or other approved use)** - 9/9

√ **Intro to MAP Assessments** - 9/9 or 9/22

√ **Let's Get Organized!** - 9/16 or 9/28

√ **What's Your RIT?** - 9/29

√ **Assessing & Understanding MAP Reports** - 10/7 or 10/11

Community Corner

√ Retired Teacher Sale: stuff for grades 1-5: Jayne Kohn, 632 N. 29th St., Friday, August 27, 3:30-7:30 pm. For a list of supplies, e-mail jkohn@bis.midco.net. If that time doesn't work, call 258-1506.

√ Women's Equality Day Awareness Walk: Saturday, Aug. 28 from 10 am to noon at the Burleigh County Courthouse south steps sponsored by the ND Women's Network. This walk celebrates the 90th anniversary of Women's Suffrage granted by the 19th Amendment to the U.S. Constitution. For further information, contact Heidi Jacobs, network@ndwomen.org, 223-6985.

√ Apple Dash Run-Walk: Sunday, Sept. 12, 4 pm at Hughes field. To register, go to bismarckschools.org under the Alumni/BPSF link. Cost for employees is only \$10 and money goes back into classrooms!

√ ND Teachers Fund for Retirement information meeting: Wednesday, Sept. 15, 6:30-8 pm at Horizon in the cafetorium. For school personnel who may have questions about how the financial market meltdown affected TFFR and what legislative proposals are being considered to address the situation. To learn more, contact Fay Kopp at fkopp@nd.gov or 701-328-9895.

√ Designer Genes Buddy Walk: Saturday, Sept. 18, 10 am at N.D. Capitol, to promote inclusion of persons with Down Syndrome and all abilities. No pre-registration. Learn more at designergenesnd.com/buddywalk.html.

BPS Employee Walk-Run Results!

Thanks to those who joined in the fun on Tuesday morning! This event is growing in popularity. A record was set: 317 participants vs. 267 in 2009 and 254 in 2008. Congratulations to South Central (90%) and Sunrise (49%) for having the highest participation rates for a secondary and an elementary school. Close behind were Roosevelt (47%) and Miller (41%).

The rest of the results follow: Wachter (31%), Riverside (30%),

Grimsrud (26%), Highland Acres (25%), Murphy (24%), Will-Moore (23%), Moses (23%), Horizon (16%), Hughes/Central Office (15%), Centennial (14%), Saxvik (12%), Simle (11%), Northridge (10%), Facilities & Transportation (8%), CHS (8%), Career Academy (8%), Pioneer (7%), BHS (6%), Solheim (5%), BECEP (5%), Prairie Rose (3%), and Myhre (2%).

Congratulations to those who won individual door prizes, too!

Important "tidbits" for all BPS staff!

1. During the school year, the Hughes Educational Center (HEC) will now be CLOSED at 4 pm on Fridays. Hughes staff can choose to work at 7 or 7:30 am that day and take an hour or 1/2 hour lunch.

2. Information for EMPLOYEES will no longer be posted on individual SCHOOL websites. It will be posted on the BPS district home page (bismarckschools.org) and/or the Employees tab at the top. This will leave room on school home pages for parent/student info and events!

3. District e-mail should NOT be used to distribute personal fliers/posters about non-BPS sponsored events/activities. Questions? Contact Community Relations, 323-4091, renae_walker@bismarckschools.org.

4. All insurance changes need to be made by Wednesday, September 8. Please send all forms to Human Resources at Hughes.

5. News media is always looking for stories to cover in our schools. Please forward suggestions to renae_walker@bismarckschools.org. Media are notified by noon Fridays about stories in our schools for the upcoming week.

6. Congratulations to our Transportation Department for scoring another perfect 100% on the state bus inspection!

7. Sunglasses? Someone lost a pair near the floor seating area at the Civic Center on Wednesday. Claim them by calling Hughes, 323-4000.

Job Opportunities

K-12 Instructional Aides 2010-11

To learn more and apply, visit bismarckschools.org under the "Job Opportunities" link.